



# *Making an Impact*

*During an Unprecedented Year*



South  
Saskatchewan  
Community  
Foundation

**2020 Annual Report**





**We do not want to disturb our future generation for our children and grandchildren. The leaves fall when they are done here on Earth, the leaves that return to the Earth are the future trees inside Mother Earth, and these in turn are the future forest. The human, when done life on Earth, will return in the future as our grandchildren. Knowing this, we should be respectful of our grandchildren. Knowing this, we should be respectful of our future generations and only take from Earth what you need. Every time you take something, you should make an offering and pray. Be respectful and walk in a sacred way.**

***- Elder Margaret Masney***



South Saskatchewan Community Foundation acknowledges our presence on Treaty 4 and Treaty 6 territories; the original lands of the Cree, Dene, Ojibwe, Saulteaux, Dakota, Nakota, Lakota, and on the homeland of the Métis.

*We believe in facilitating Saskatchewan philanthropy, supporting local charities and developing our community so that our home is a more vital, strong, and fair place to live, work and play.*

## *Vision*

By 2022, the Foundation will have an expanded presence across southern Saskatchewan through enhanced donor relations, an increased asset base, and community impact.

## *Mission*

The Foundation facilitates philanthropy by investing charitable gifts and bridging donor desires with community needs. We support agencies, charities, and causes to enrich the quality of community life.

## *Values*

- Trustworthiness
- Accountability
- Responsiveness
- Collaboration
- Benevolence

## *Our 2020 Staff*



**Donna Ziegler**  
Executive Director



**Karen Henders**  
Director of Community & Grant Stewardship



**Vanessa Bonk**  
Director of Finance and Administration



**Lorna Sandberg**  
Donor Services Administrator



**Tiffany Caron**  
Granting and Digital Administrator



**Kaitlin Corcoran**  
Administrative Officer



**Victor Roman**  
Communications and Marketing Specialist

## *Board of Directors*

**Leslie Ciz**, Co-Chair

**Randy Semenchuck**, Co-Chair

**Gina McGinn**, Vice-Chair

**Jack Ritenburg**, Secretary

**Shelley Thiel**, Treasurer

**Janet Barber**, Director

**Gordon Braun**, Director

**Mo Bundon**, Director

**Phoebe De Ciman**, Director

**Bula Ghosh**, Director

**Ann Phillips**, Director

**Cheryl Zankl**, Director

A proud  
member of the





# A Message from Our *Board Co-Chairs*

---



Leslie Ciz

## **Our hope and dream for southern Saskatchewan is a thriving community with a culture of sharing, generosity, and inclusivity.**

Our volunteer Board of Directors is committed to fulfilling South Saskatchewan Community Foundation's (SSCF) strategic vision and is honoured to represent the communities we serve each day. Throughout 2020, our inward and outward growth has been unprecedented. The pandemic shifted the way we governed, the way we prioritized, the way we collaborated, and the way we listened.

Our strategic vision continues to evolve in many ways. This year, there was more granting than ever, greater community impact, and enhanced outreach with our donors. We persevered and built upon a core value of collaboration. Even with challenging financial times, we focused efforts on bridging donor desires with community needs. Together, we are proud of significant milestones in our communities to enrich the quality of life.

Throughout the busiest year in SSCF's 51-year history, we were consistently inspired by the efforts of our knowledgeable staff and the tireless leadership of our Executive Director, Donna Ziegler. Each day, engagement was at the forefront. This dynamic team stepped up to keep our Foundation's vision top of mind and put our values into action amidst the most challenging times.



Randy Semenchuck

It was a privilege for the Board to provide leadership to the Foundation through enhanced donor relations, increasing our asset base and making a stronger community impact. Thank you to Greg Swanson, who retired from the Board as Past Chair in 2020 after his eight years of service. We built from his perspective, guidance and vision with our Foundation. We are deeply honoured to welcome new members Phoebe De Ciman and Ann Phillips, who quickly engaged, bringing additional insight into diversity and community.

At the heart of our efforts, our Board and staff are ever-grateful to so many people who make it possible for charitable organizations to achieve their goals, nurture community wellbeing and bolster a sense of belonging. It has been encouraging to see new Funds established and leverage funding to meet local needs. Our continued focus to increase our asset base will help make many more community dreams come true.

Our team reflects upon 2020 as one where our Foundation made its **greatest community impact to date**. We look forward to our future path, ready to build on the solid leadership and stewardship base that has been put in place during this unprecedented year of enormous growth within our community Foundation. Thank you to all!

Leslie Ciz, Co-Chair

Randy Semenchuck, Co-Chair

# A Message from Our *Executive Director*

---



Donna Ziegler

It is hard to summarize an extraordinary year like 2020 with the pandemic which continues into 2021.

While our world faced unique challenges in 2020, the Foundation staff and Board witnessed the best of humanity in countless ways. Never in SSCF's 51-year history has the impact of community been so profound. Every day we were humbled by wholehearted and selfless acts of generosity from donors who consistently stepped up to help meet others' needs. As you'll read in this report, we took on more programs than ever before so that charities could help community members.

**Together with SSCF donors, Community Foundations of Canada and the federal government, we were able to grant \$9.4 million to 225 organizations in 2020 and start five new Funds. It was a record year of granting, only made possible with amazing support from our community.**

In the face of multiple challenges and limitations, we were also able to witness the multitude of creative acts of kindness and compassion in neighbourhoods right across southern Saskatchewan and Canada that touched hundreds of lives. SSCF granted to many local charities in Moose Jaw, Weyburn, Regina, Oxbow, Cowessess First Nation, Stoughton, Yorkton, White Bear, Gainsborough, and many more!

I was inspired by the endless acts of humanity. Philanthropy was hard at work this year and I recall learning how teams including those at North Central

Family Centre, Regina Early Learning Centre and Eden Care Communities stepped outside some typical roles to ensure families were at the heart of their local efforts. I reflect on how we were humbled to administer the Leader-Post Christmas Cheer Fund for the first time in 2020 and the words of kindness donors shared with each donation. We rapidly embraced technology to convene the community in a brand-new way. I was impressed by our Vital Signs Community Network's engagement. They advanced attention and hope in a way we are all proud of.

I cannot say enough about the commitment and energy of our small and mighty home team. Each day SSCF staff rallied together with creativity and patience. They tackled what felt like insurmountable challenges. We stayed connected with biweekly virtual Zoom calls. We took time to understand their COVID-19 stress. We were flexible with personal and family needs. Last year, we added five new funds, including a legacy fund they helped build when I experienced my own loss during COVID-19. My family and I are forever grateful.

At the same time, we expanded our internal team's capacity with a focus on communications. We revamped our website, branding efforts and continued to share important stories in new ways. Our goal ahead is to reach more donors and have more impact while finding ways to say thank you every day.

Throughout the year, our visionary Board of Directors supported our tireless team with solid leadership. They kept connected, informed and never lost sight of the Foundation's vision. Our governance style moved to a Zoom environment, and we found ourselves learning along the way with the help of webinars by our friends at Community Foundations of Canada and the Institute of Corporate Directors. We are grateful for their engagement and leadership.

While 2020 has come and gone, many of the challenges that arose last year continue to be present today. This means communities in southern Saskatchewan still need additional support. We encourage you to give if you can and keep your community strong. If you want to find out how SSCF can support your giving desires, please reach out, and we will help you make YOUR community impact.

Donna Ziegler, Executive Director

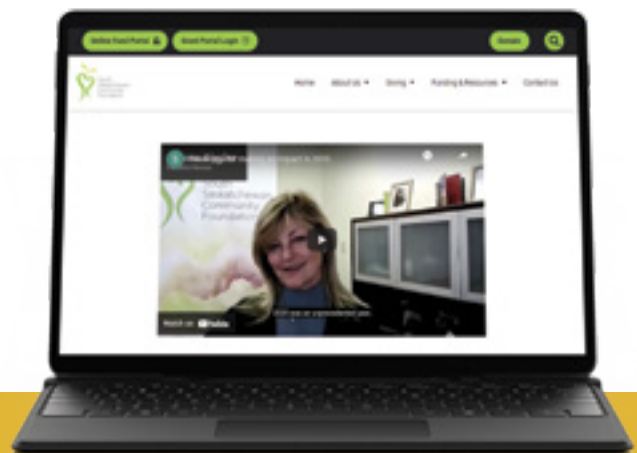
# *2020: A Changed World* Our COVID-19 Response



2020 was an unprecedented year, but the generosity of donors and volunteers in our community has positively shaped our world. Whether you opened your wallet for an important cause, worked for an organization supporting people through the pandemic, or found other ways to volunteer your time; all of us at South Saskatchewan Community Foundation can't thank **YOU** enough for your efforts.

This funding was facilitated through two specific initiatives: SSCF's Emergency Response Fund for Community Needs and the Government of Canada's Emergency Community Support Fund.

**More than \$2.1 million was granted in direct response to COVID-19 related challenges and initiatives as a result of the combined efforts of SSCF donors, Community Foundations of Canada and the Government of Canada.**



Watch SSCF's 2020 impact video message at  
**[www.sscf.ca/2020-video](http://www.sscf.ca/2020-video)**

# SSCF's Emergency Response Fund for Community Needs

Almost immediately after the onset of the COVID-19 pandemic, the SSCF Board and staff moved swiftly to establish the Emergency Response Fund for Community Needs (ERF). This initiative was intended to address urgent community needs resulting from the pandemic.

More than \$1 million, which included funding from the estate of a generous SSCF founding member and donations rallied by community leaders, was quickly made available. A team of community stakeholders assessed more than 50 applications. This Fund provided urgent help for addressing food security issues, shelter shortages, helping with children's needs, and meeting the most vulnerable populations' needs.

Within four weeks, our community raised approximately \$1 million and granted it to 32 organizations. By June, we had granted an additional \$60,000 to two organizations.

**This funding resulted in a total of \$1,044,325 being awarded to 34 organizations within the ERF initiative.**

"Generous donors and numerous organizations stepped up to ensure front-line charities could assist those in most desperate need," says Donna Ziegler. "With it, approximately \$1 million went directly back to the community. This assistance included a matching \$500,000 made available from the estate of a generous founding member of the Foundation. We are indebted for all efforts to help to ensure essential needs in our community are met."

## Government of Canada's Emergency Community Support Fund



The Government of Canada's Emergency Community Support Fund (ECSF) provided \$350 million in financial support to local charities responding to COVID-19 as part of a partnership with Community Foundations of Canada, United Way Centraide Canada, and the Canadian Red Cross.

This vast national effort aimed to support vulnerable populations disproportionately affected by COVID-19. SSCF is among 150 local community foundations across Canada that took part in the initiative.

The first round of ECSF funding provided \$720,590 to support local charities during the summer of 2020. The second round of funding within 2020 awarded an additional \$344,953 towards qualified applicants.

**In total, SSCF distributed \$1,065,543 into the community through the ECSF.**





# Emergency Response Fund for Community Needs Recipient Moose Jaw Transition House

The Moose Jaw Transition House was one of 34 recipients of the Emergency Response Fund for Community Needs. In an average year, the organization supports more than 100 women and children through its Shelter. Unfortunately, during times of crisis, domestic violence escalates. Factors such as stress, isolation, and job loss are known to perpetrate violence in the home.

Jenn Angus, Executive Director of the Moose Jaw Transition House, says the funds received increased the organization's capacity for dealing with these issues.

Expecting domestic violence rates to go up, the funds enabled the hiring of their Emergency Outreach Worker, Tammy McCleary, for one year. Tammy's role was to manage an increase in shelter use. However, despite higher rates of domestic violence, the volume of women calling the Shelter decreased.

"This was cause for concern as it was suspected that those who needed to use their services were not comfortable accessing the shelter during the pandemic," says Angus. "As a result, Tammy's role was shifted to provide direct outreach to women and families and reach them where they were. Tammy helped secure immediate safety, housing, crisis support and food security to those who needed it."

Tammy reached approximately 250 women with her work, including more than 40 expecting mothers, 90 seniors, and 70 newcomers.

"The funds were pivotal," says Angus. "People were reached where they were at and given access to and knowledge of our services. With this assistance, community members were more aware and knowledgeable about how to be safe."

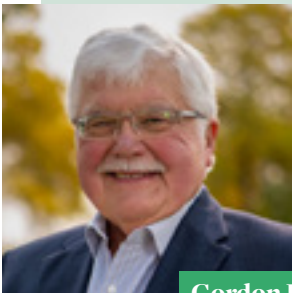


Tammy McCleary, Moose Jaw Transition House Emergency Outreach Worker

**"These are the things that we felt we wouldn't have been able to do without the Emergency Response funding," she adds. "They wouldn't have known that they could reach out. This program was essential to reach all of these families and women in need who may have been neglected or not realized they could use the service at all. They now have a stronger, healthier social support network and can identify the social ties that provide support when needed."**

"The work that SSCF does to support Saskatchewan and our communities is outstanding," says Angus. "How quickly they rallied to make these funds available was incredible. It shows how much SSCF does for Saskatchewan communities and how much they care about communities in this province. You don't see that every day. I want to thank the donors and the SSCF for supporting over 250 individuals in our community through this pandemic."

“



Gordon Braun, Director at SSCF's Board of Directors

It takes years to build a non-profit organization's credibility in the community. The financial impacts of the pandemic in even one year can potentially set an organization back by five or ten years. That's why an initiative like the Emergency Response Fund was important to help to avoid operational setbacks and negative impacts on organizations as quickly as possible.

Our staff and Board acted with regional knowledge to locate where the greatest vulnerabilities might be in an attempt to limit damages to a sector during their time of urgent need.





## *Emergency Community Support Fund Recipient* Oxford House Saskatchewan



Oxford House Saskatchewan (OHS) opened in 2010, providing essential resources for those fighting against addictions and homelessness after they successfully complete an approved treatment program.

The Government of Canada's Emergency Community Support Fund provided financial support to OHS towards a pilot project intended to improve program service by assisting OHS members in acquiring employment in a more expedient and efficient manner.

Blair Pope, Executive Director, says it is vital for OHS Members to begin their long-term recovery in a safe, abstinence-based, peer-supported environment.

“**Approximately 25 percent of our clientele struggle to find a job. Based on 25 beds, this translates to five individuals at any one time requiring assistance to acquire employment. This pilot project provides support so that our Members can acquire employment more quickly and efficiently.**

Blair Pope, Executive Director at OHS

He adds that individuals who seek post-treatment recovery are 14 times more likely to succeed than people who try coping on their own. The amount of time spent in a program like Oxford House is directly proportional to the likelihood of long-term success in remaining clean and sober.

“The opioid pandemic has quickly taught those in the addictions recovery world that going to a treatment centre is just the beginning of recovery,” says Pope. “Without post-treatment recovery, the chances of being back on the street are significant.”

# The success of our communities is measured by the results *powered by you.*

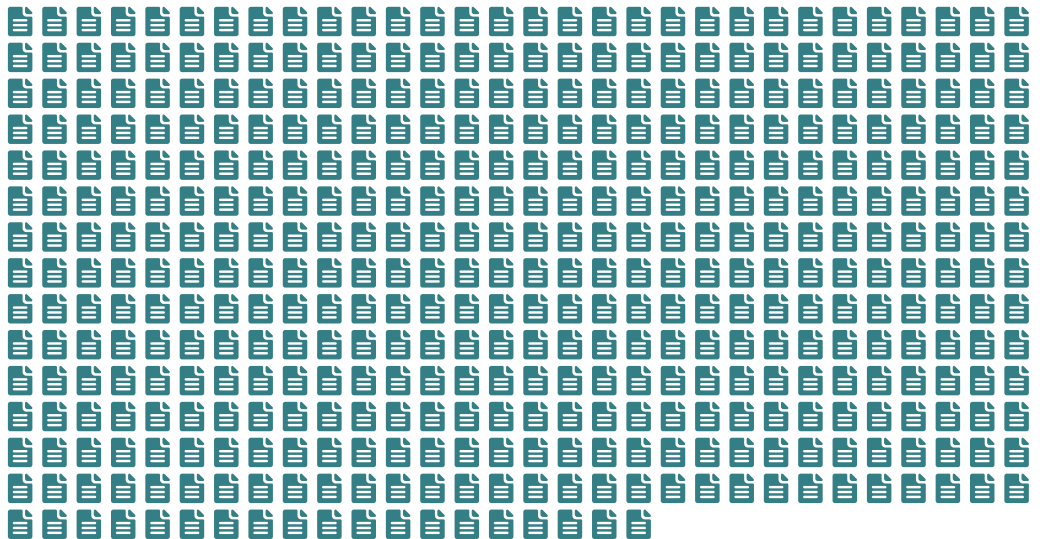
Those who support the South Saskatchewan Community Foundation show us the way. You show us, by your example, that each of us has the power to make a difference, and together, we can address even the greatest challenges.

## \$9,444,763.01

**in Grants Distributed During 2020**

## 439

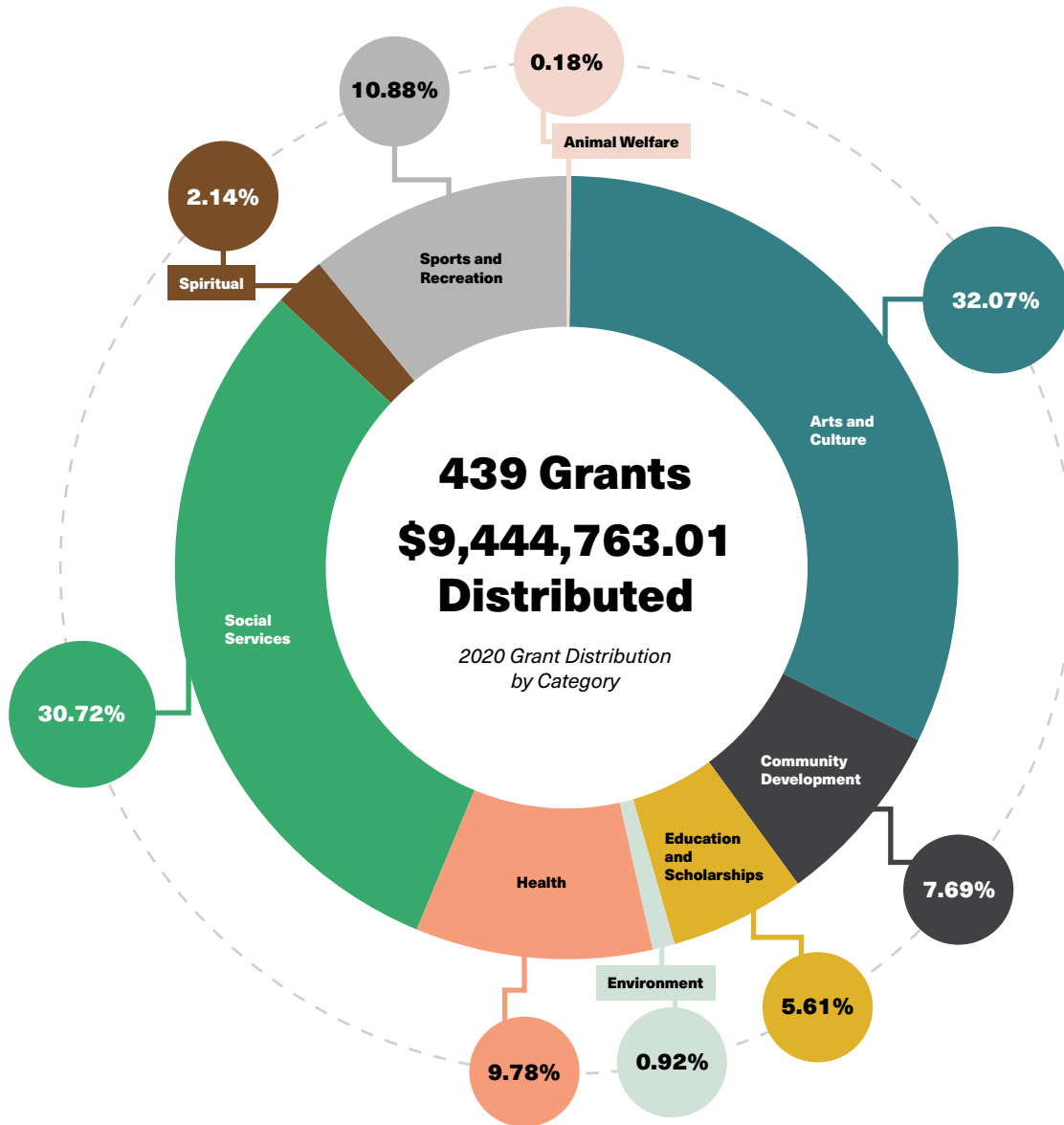
**Grants  
Provided**



## 225

**Charities  
Supported**

# A Record Year of Granting



<b>Animal Welfare</b>	6 Grants	\$17,289.48	<b>Health</b>	88 Grants	\$923,706.67
<b>Arts and Culture</b>	47 Grants	\$3,029,218.13	<b>Social Services</b>	163 Grants	\$2,901,140.56
<b>Community Development</b>	22 Grants	\$726,607.09	<b>Spiritual</b>	34 Grants	\$202,494.26
<b>Education and Scholarships</b>	63 Grants	\$529,687.81	<b>Sports and Recreation</b>	7 Grants	\$1,027,869.01
<b>Environment</b>	9 Grants	\$86,750.00	<b>TOTAL</b>	<b>439 Grants</b>	<b>\$9,444,763.01</b>



NOTE: Various organizations received more than one grant in 2020 and have been compiled into a single dollar amount per organization below.

## Animal Welfare

Recipient Charity/Qualified Donee	Total \$ Amount
Estevan Humane Society Inc.	\$3,047.37
Prince Albert Society for the Prevention of Cruelty to Animals Inc.	\$3,047.37
Regina Humane Society Inc.	\$8,147.37
Weyburn Humane Society Inc.	\$3,047.37
<b>TOTAL</b>	<b>\$17,289.48</b>

## Arts and Culture

Recipient Charity/Qualified Donee	Total \$ Amount
Cecilian Chamber Series	\$5,000.00
City of Weyburn	\$10,000.00
Common Weal Community Arts Inc	\$15,000.00
Creative Kids Canada Inc.	\$14,537.50
Friends of the Canadian Museum For Human Rights Inc.	\$1,000.00
Globe Theatre Society	\$1,500.00
Government House Foundation	\$1,000.00
J M Curtain Razors Inc.	\$200.00
MacKenzie Art Gallery Inc.	\$2,548,344.25
Moose Jaw Literacy Network	\$2,000.00
Moose Jaw Museum & Art Gallery	\$5,000.00
North Central Family Centre Inc.	\$2,000.00
RCMP Heritage Centre	\$1,000.00
Regina Little Theatre Society Inc	\$7,500.00
Regina Lyric Musical Theatre Inc.	\$100.00
Regina Music Festival Association Inc.	\$200.00
Regina Performing Arts Centre	\$1,000.00
Regina Summer Stage Inc.	\$100.00
Regina Symphony Orchestra Inc.	\$370,064.07
Saskatchewan Band Association	\$24,000.00
Saskatchewan Express Society Inc.	\$1,100.00
Saskatchewan Festival of Words	\$2,000.00
Saskatchewan Foundation For The Arts	\$1,000.00
Saskatchewan Science Centre Inc.	\$700.00
Saskatchewan Writers' Guild Inc.	\$100.00
The National Theatre School of Canada	\$4,272.31
The South Saskatchewan Youth Orchestra	\$3,000.00
Tommy Douglas Centre Inc.	\$2,000.00
University of Regina	\$5,500.00
<b>TOTAL</b>	<b>\$3,029,218.13</b>

## Community Development

Recipient Charity/Qualified Donee	Total \$ Amount
Battlefords United Way	\$2,000.00
City of Regina	\$643,549.51
Cowessess First Nation No 73	\$10,000.00
Eden Care Communities	\$500.00
Habitat For Humanity Regina Inc.	\$11,033.46
Knox-Metropolitan United Church	\$2,000.00
Mothers Against Drunk Driving (MADD Canada)	\$400.00
R.M. of Silverwood No. 123	\$3,017.79
Resort Village of B-Say-Tah	\$1,000.00
RM of Lac Pelletier No. 107	\$501.92
Spinal Cord Injury Saskatchewan Inc.	\$2,000.00
The Saskatchewan 4-H Foundation	\$1,936.00
The Weyburn & District United Way (United Way of Regina)	\$1,500.00
Town of Arcola	\$4,168.41
United Way of Regina	\$33,000.00
United Way of Saskatoon and Area	\$8,000.00
YWCA Regina	\$2,000.00
<b>TOTAL</b>	<b>\$726,607.09</b>

## Education and Scholarships

Recipient Charity/Qualified Donee	Total \$ Amount
Alberta Bible College	\$802.96
Big Brothers Big Sisters of Moose Jaw	\$10,000.00
Brandon University	\$3,400.00
Campion College	\$10,200.00
Cowessess Community Educational Centre	\$19,858.83
First Nations University of Canada Inc.	\$8,506.21
Frontier College, Prairie Region	\$200.00
Gobeil-Aiken, Jenna	\$971.62
Holy Rosary Cathedral	\$4,000.00
Ignite Adult Learning Corporation	\$60,149.00
Inuit Tapiriit Kanatami	\$4,253.10
Luther College, Regina	\$44,902.97
Moose Jaw Literacy Network	\$3,500.00
Mount Royal University	\$3,400.00
Prairie Valley School Division No. 208	\$5,188.00
Queen's University at Kingston	\$1,000.00
Randolph School of the Arts	\$6,800.00
Regina Early Learning Centre Inc.	\$76,490.58

## Education and Scholarships (Cont.)

Recipient Charity/Qualified Donee	Total \$ Amount
Regina Food For Learning	\$5,000.00
Regina Public Library	\$1,000.00
Robinson, Phillip	\$2,000.00
Sage Hill Writing Experience Inc	\$1,000.00
Saskatchewan Science Centre Inc.	\$250.00
South East Cornerstone School Division No. 209	\$1,000.00
Southeast Regional Library	\$3,017.79
St. Clair College	\$3,400.00
St. Lawrence Alumni Foundation	\$1,500.00
St. Lawrence College	\$6,800.00
St. Thomas More College	\$6,500.00
The Saskatchewan 4-H Foundation	\$3,017.79
Treaty Education Alliance Inc.	\$48,518.00
United Way of Estevan	\$2,800.00
United Way of Regina	\$20,000.00
University of Regina	\$107,702.96
University of Saskatchewan	\$42,558.00
YWCA Regina	\$10,000.00
<b>TOTAL</b>	<b>\$529,687.81</b>

## Environment

Recipient Charity/Qualified Donee	Total \$ Amount
David Suzuki Foundation	\$20,000.00
Nature Saskatchewan	\$5,000.00
Saskatchewan Stock Growers Foundation	\$9,000.00
Saskatchewan Waste Reduction Council	\$20,000.00
Saskatoon Zoo Society Inc.	\$11,750.00
The Nature Conservancy of Canada - Saskatchewan Division	\$11,000.00
TREC Charitable Foundation (o/a Relay Education)	\$10,000.00
<b>TOTAL</b>	<b>\$86,750.00</b>

## Health

Recipient Charity/Qualified Donee	Total \$ Amount
AIDS Programs South Saskatchewan	\$37,000.00
All Nations Hope Network	\$50,000.00
ALS Society of Saskatchewan	\$240.85
Alzheimer Society of Canada	\$200.00
Alzheimer Society of Saskatchewan Inc.	\$33,245.32
Birthright of Regina	\$500.00

Canadian Cancer Society - Saskatchewan	\$40,000.00
Canadian Liver Foundation - Manitoba/Saskatchewan	\$400.00
Canadian Mental Health Association - Swift Current Branch	\$16,000.00
Canadian Mental Health Association - Weyburn Branch	\$1,500.00
Canadian Mental Health Association - Saskatchewan Division	\$65,000.00
Canadian Red Cross - Saskatchewan	\$500.00
Cancer Foundation of Saskatchewan	\$13,045.32
Caring Hearts Counselling Inc.	\$100,000.00
Carmichael Outreach Inc.	\$2,000.00
Crohn's and Colitis Canada	\$1,100.00
Diabetes Canada	\$100.00
Dystonia Medical Research Foundation Canada	\$200.00
Eden Care Communities	\$4,000.00
Envision Counselling and Support Centre Inc.	\$49,000.00
Epilepsy Canada	\$400.00
Family Resource Centre Swift Current Inc.	\$5,500.00
Family Service Regina	\$30,000.00
Fort Qu'Appelle Community Outreach Management Centre	\$2,000.00
Heart and Stroke Foundation of Canada - Saskatchewan	\$10,045.32
Hope Air	\$10,000.00
Hospitals of Regina Foundation Inc.	\$54,895.00
Jim Pattison Children's Hospital Foundation	\$20,800.00
Joe's Place Youth Centre - Generation Hope Youth Inc.	\$6,000.00
Moosomin & District Health Care Foundation Inc.	\$3,017.79
Multiple Sclerosis Society of Canada - Saskatchewan Division	\$675.00
Osteoporosis Canada	\$400.00
Parkinson Canada Inc.	\$400.00
Phoenix Residential Society	\$10,000.00
Prairie Wind Estate Inc.	\$40,000.00
Regina Transition House Inc.	\$1,700.00
Saskatchewan Health Authority	\$800.00
Schizophrenia Society of Saskatchewan Inc.	\$16,250.00
St. Paul's Hospital Foundation Inc.	\$10,000.00

## Health (Cont.)

Recipient Charity/Qualified Donee	Total \$ Amount
STARS	\$44,639.56
Swift Current Community Youth Initiative	\$30,000.00
The Arthritis Society	\$8,045.32
The Canadian National Institute for the Blind	\$16,207.19
The Caring Place Regina Inc.	\$118,900.00
The Lung Association of Saskatchewan	\$1,000.00
The War Amputations of Canada	\$10,000.00
United Way of Estevan	\$50,000.00
Weyburn & District Hospital Foundation Inc.	\$8,000.00
<b>TOTAL</b>	<b>\$923,706.67</b>

## Social Services

Recipient Charity/Qualified Donee	Total \$ Amount
AIDS Programs South Saskatchewan	\$32,300.00
Amnesty International Canadian Section	\$400.00
Big Brothers Big Sisters of Regina and Area Inc.	\$55,000.00
Big Brothers Big Sisters of Yorkton and Area Inc.	\$30,000.00
CARE Canada	\$1,900.00
Caring Hearts Counselling Inc.	\$1,197.34
Carmichael Outreach Inc.	\$85,000.00
Catholic Family Service Society	\$90,529.00
Child Find Saskatchewan Inc.	\$700.00
Chili for Children	\$13,000.00
Common Weal Community Arts Inc.	\$29,000.00
Community Living	\$38,350.00
Dress for Success Regina	\$7,500.00
Eden Care Communities	\$52,000.00
Envision Counselling and Support Centre Inc.	\$10,660.00
Estevan Salvation Army Food Bank	\$10,300.00
Family Service Regina	\$58,500.00
Farmland Legacies GTC Inc.	\$12,000.00
Food Banks of Saskatchewan	\$155,000.00
Fort Qu'Appelle Community Outreach Management Centre	\$9,350.00
Hope's Home	\$1,536.60
Hunger in Moose Jaw Inc.	\$25,000.00

Inclusion Weyburn	\$16,200.00
Joe's Place Youth Centre - Generation Hope Youth Inc.	\$18,500.00
Kids Help Phone	\$600.00
Kinsmen Foundation Inc.	\$8,045.32
Lions Foundation of Canada	\$1,536.60
MacKenzie Infant Care Centre Inc.	\$5,000.00
Maple Creek Corps and Community Family Services	\$4,000.00
Marian Centre Inc.	\$10,000.00
Métis Addictions Council of Saskatchewan Inc.	\$30,000.00
Moose Jaw and District Food Bank Inc.	\$3,500.00
Moose Jaw Association for Community Living Inc.	\$32,740.00
Moose Jaw Family Services Inc.	\$5,000.00
Moose Jaw Multicultural Council Inc.	\$6,600.00
Moose Jaw Transition House	\$62,000.00
Moosomin Organization for Transportation of Handicapped	\$3,017.79
Mother Teresa Middle School Inc.	\$50,000.00
Neil Squire Society	\$5,000.00
Newo Yotina Friendship Centre	\$50,000.00
North Central Family Centre Inc.	\$103,100.00
Oxbow Emergency Support Program	\$5,000.00
Oxford House Saskatchewan Incorporated	\$38,900.00
Phoenix Residential Society	\$87,416.00
Prince Albert Métis Women's Association Inc.	\$40,000.00
Provincial Association of Transition Houses and Services of Saskatchewan, Inc	\$55,000.00
Qu'Appelle and District Volunteer Fire Department	\$15,000.00
Ranch Ehrlo Society	\$50,200.00
READ Saskatoon Inc.	\$20,000.00
REALM Foundation Inc.	\$13,903.96
Regina & District Food Bank Inc.	\$137,286.79
Regina Anti-Poverty Ministry	\$15,000.00
Regina Early Learning Centre Inc.	\$43,100.00
Regina Open Door Society Inc.	\$15,000.00
Regina Public Library	\$12,099.00
Regina Sexual Assault Centre Inc.	\$23,650.00
Regina Transition House Inc.	\$46,885.23



## Social Services (Cont.)

Recipient Charity/Qualified Donee	Total \$ Amount
Regina Work Preparation Centre Inc.	\$19,000.00
Roots of Empathy Moose Jaw	\$10,000.00
Saskatchewan Abilities Council	\$57,500.00
Saskatchewan Association for the Rehabilitation of the Brain Injured	\$30,000.00
Saskatchewan Voice of People with Disabilities Inc.	\$30,000.00
Saskatoon Community Youth Arts Programming Inc.	\$50,000.00
Saskatoon Food Bank Incorporated	\$100,000.00
SCEP CENTRE Society (Regina)	\$16,006.21
Sexual Assault Services of Saskatchewan	\$19,196.00
SOFIA House Inc.	\$114,500.00
Souls Harbour Rescue Mission	\$86,000.00
South East Cornerstone School Division No. 209	\$30,000.00
South West Crisis Services Inc.	\$10,000.00
Spinal Cord Injury Saskatchewan Inc.	\$25,000.00
Street Culture Kidz Project Inc.	\$100,992.00
TFHQ Safe Shelter Incorporated	\$5,000.00
The Canadian National Institute for the Blind	\$70,225.72
The Family Place	\$1,345.00
The John Howard Society of Saskatchewan	\$35,000.00
The Moose Jaw Non-Profit Housing Corporation	\$50,000.00
The Salvation Army Community Church (Swift Current)	\$2,000.00
The Salvation Army Regina Waterston Centre	\$500.00
The Salvation Army Weyburn Corps	\$10,000.00
Valour Place Society	\$1,000.00
Visitation House	\$5,000.00
West Central Crisis & Family Support Centre Inc.	\$1,000.00
Weyburn Wor-Kin Shop Corp.	\$1,500.00
YMCA Regina	\$4,000.00
YWCA Regina	\$263,872.00
<b>TOTAL</b>	<b>\$2,901,140.56</b>

## Spiritual

Recipient Charity/Qualified Donee	Total \$ Amount
Archdiocese of Regina	\$10,000.00
Bethel United Church	\$3,017.79
Blessed Sacrament Parish	\$15,013.75
Buddhist Centre of Regina Inc.	\$10,000.00
Calvary Baptist Church	\$15,000.00
Canadian Lutheran World Relief - International Headquarters	\$3,000.00
Covenant House Vancouver	\$500.00
First Presbyterian Church, Regina	\$100.00
Holy Child Parish	\$8,000.00
Holy Cross Church	\$500.00
Knox-Metropolitan United Church	\$16,000.00
Regina Beach United Church	\$709.35
Roman Catholic Parish of St. Anthony of Regina	\$3,200.00
Santa Maria Senior Citizens Home Inc.	\$3,000.00
Southeast Saskatchewan Youth for Christ Inc	\$1,500.00
St. Andrew's United Church	\$500.00
St. Matthew's Anglican Church	\$25,000.00
St. Paul's Anglican Cathedral - Kamloops	\$2,000.00
St. Paul's Cathedral - Regina	\$16,000.00
Synod of the Diocese of Qu'Appelle	\$10,000.00
The Generalate of the Sisters of the Precious Blood	\$1,000.00
Tisdale United Appeal	\$1,200.00
Trinity Evangelical Lutheran Church	\$49,504.95
Ukrainian Catholic Church of Transfiguration	\$4,530.63
United Israel Appeal of Canada Inc.	\$200.00
Wawota United Church	\$3,017.79
<b>TOTAL</b>	<b>\$202,494.26</b>

## Sports and Recreation

Recipient Charity/Qualified Donee	Total \$ Amount
Boy Scouts of Canada, Saskatchewan Provincial Council	\$4,000.00
City of Weyburn	\$30,000.00
Kennedy Friendship Club Inc.	\$3,170.00
KidSport Saskatchewan	\$600.00
National Sport Trust Fund - Saskatchewan Chapter	\$990,099.01
<b>TOTAL</b>	<b>\$1,027,869.01</b>

## MNP Community Fund

# Supporting Regina, Estevan and Weyburn Throughout COVID-19



Staff at the Regina & District Food Bank in PPE preparing delivery hampers in boxes after shifting to COVID-19 safety protocols.

The MNP Community Fund was established at SSCF in 2017 by MNP partners based in Regina, Estevan and Weyburn to support community programs and initiatives in those communities.

In 2020, the Fund prioritized sending aid to those impacted by COVID-19 in the communities they support. As a result, a total of \$52,500 was distributed towards the Regina & District Food Bank (\$35,000), the Salvation Army Weyburn Food Bank (\$7,500), and the Salvation Army Estevan Food Bank (\$10,000). This one-time disbursement helped get food into the hands of those who needed it urgently.



**MNP is proud to support the communities where our team live and work everyday. Due to the COVID-19 pandemic and economic conditions, we knew supporting the Food Banks was more important this year than ever. It was important for us at MNP to give back and make a meaningful contribution to those in our communities being directly impacted by food insecurity during these challenging times.**

Wayne Paproski, Regina Partner at MNP



Along with many generous donors and volunteers, the MNP Community Fund's donation to the Regina Food Bank has had a profound impact on our community. During a time of unprecedented need the \$35,000 donation allowed us to purchase much needed food and supplies, like boxes for packing hampers. All told the donation can be directly linked to providing over 90,000 meals to our community.

On behalf of the volunteers, staff, and Board of the Regina Food Bank, thank you. Your commitment to creating a caring community is inspiring to our team and is making Regina a better place.

John Bailey, CEO of the Regina & District Food Bank

***Victoria Naismith***

# First Recipient of the Second Lieutenant Andrew Naismith Benevolent Fund Bursary

Second Lieutenant Andrew Naismith left behind his wife and three young children after his tragic and unexpected passing in 2003, when he was struck by a driver who fell asleep at the wheel.

Shortly after, a Fund was created in his name at SSCF. The Fund is designed to provide bursaries to his children. Afterwards, it will assist other children of Canadian Armed Forces members who have faced similar circumstances.

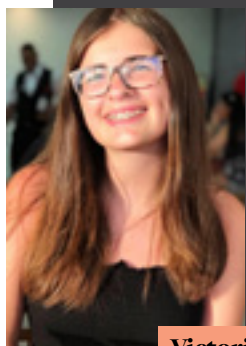
Andrew's daughter, Victoria Naismith, became the first recipient of the bursary in 2020.

This bursary is helping Victoria work towards her dream career.

"I want to be in the military... in the medical field for sure. I've always been interested in medicine and healing people. There is a need for it in the military, and it has been my dream for a long time," says Victoria.

Victoria goes on to show appreciation and hope for all future recipients of the bursary. She said, "I really hope this helps a lot of people in the future. It would make me very happy to know that it helps others achieve their goals and dreams."

“



**I felt good. It felt like I had purpose. It was nice to know that there were people that care about my father and want to help others like me.**

**Victoria Naismith**







# RBC Future Launch Community Challenge



SSCF is pleased to have hosted the Royal Bank of Canada (RBC) Future Launch Community Challenge (FLCC) and funded two youth-led projects in southern Saskatchewan with \$15,000 each in 2020.

The RBC Future Launch Community Challenge is hosted by Community Foundations of Canada and participating community foundations. It is made possible thanks to a \$5 million donation from RBC Foundation, a commitment by RBC and the RBC Foundation to empower Canadian youth for the jobs of tomorrow. Over the next ten years, RBC Future Launch is dedicating \$500 million to help young people access meaningful employment through practical work experience, skills development opportunities, networking solutions and mental well-being supports and services.

The FLCC is a call to action for youth and an opportunity to bring youth leaders to the decision-making table to build strong and vibrant communities for the future.

The following projects were supported through the program:

## ***Treaty Education Alliance Nation Builder Youth Group***

Youth leaders planned and executed a series of podcasts on land conservation and traditional knowledge preservation topics.

## ***Stoughton Central School***

Youth-led community cooking classes to teach the importance of healthy eating. In-person cooking classes shifted to virtual video cooking classes to accommodate pandemic restrictions.



***The RBC Future Launch Community Challenge is made possible thanks to support from the RBC Foundation. It is part of RBC Future Launch, a commitment to empowering Canadian youth for tomorrow's jobs.***

# Vital Community Conversations

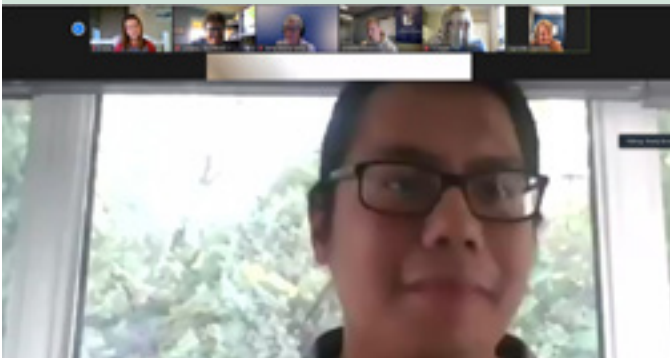
As part of the RBC Future Launch Community Challenge, SSCF hosted Vital Community Conversations during 2020 and 2021 in each community that received funding. These Vital Conversations allowed youth to express their views regarding youth leadership, challenges youth face and brainstorming ideas and solutions to overcome those challenges.

Due to complications and restrictions during the COVID-19 pandemic, the Vital Conversations were held virtually via Zoom.

The following themes emerged from each conversation:

## ***Treaty Four Gathering Vital Community Conversation***

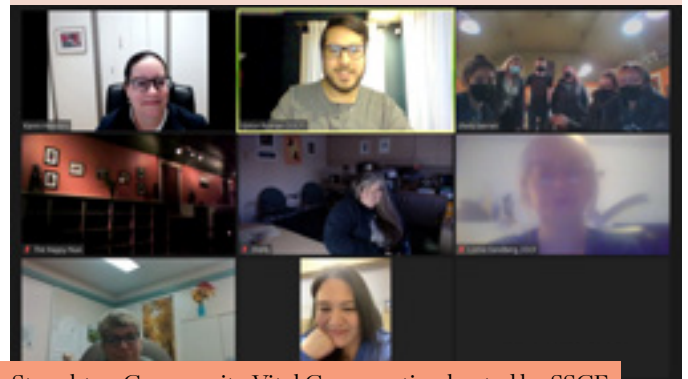
1. Being a leader means listening, taking into consideration others' opinions and experiences, and sharing power with those they are leading. This action is essential for adults to remember if they want to encourage youth leadership.
2. Adults often underestimate youth. Youth have experiences and skills that can make a difference in our communities, such as helping the older generation adapt to new technologies.
3. The pandemic has created highs and lows for youth, and there are lessons to be learned for everyone. Mental health and isolation challenges surfaced during COVID-19 in different ways, including during the transition period back to school.



**Braidy Brown**, Youth Leader hosting the Treaty 4 Gathering

## ***Stoughton Vital Community Conversation***

1. Youth need diverse sports and cultural options to learn and teach new skills.
2. Youth have many ideas regarding how they would like to lead, but there is a need for more volunteers and infrastructure to bring ideas to reality.
3. Youth have barriers to lead as they lack social interaction and connections with others during the pandemic. Isolation is hindering their ability to follow their passions and find opportunities to lead.



Stoughton Community Vital Conversation hosted by SSCF



**During the meeting, I had found everything very informative. It gave a great outlook on our community's problems, not only because of the COVID-19 pandemic but also because of the lack of resources. These circumstances have made it very hard for the children, youth and adults in our community. The meeting helped put things into perspective as we talked about different ways to try and overcome this and get more people involved in the community.**

**Yvcian Orpiano**, Youth Leader and student at Stoughton Central School (Age 16)

# Vital Signs Community Network

The Vital Signs Community Network (VSCN) brings together organizations and community leaders to stay informed and encourage collaboration and partnerships so that together we can best address the needs of today and prepare for the needs of tomorrow.

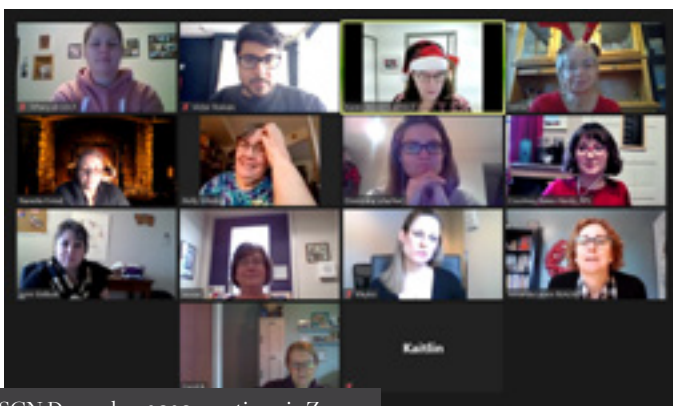
VSCN members act as a sounding board for SSCF to ensure the relevance and effectiveness of its community engagement and knowledge sharing, particularly its Vital Signs® research, to enhance the Foundation's ability to provide community leadership.

2020 was a year of transition for the VSCN but also a year of growth and new opportunities. Quarterly meetings, which typically happen in-person, shifted to online Zoom calls. This change allowed us to expand our presence at VSCN meetings to be more accessible to attendees from across southern Saskatchewan.

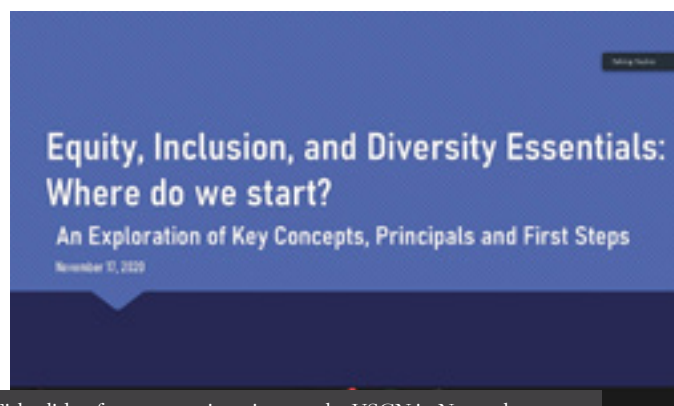
SSCF also formed partnerships with the University of Regina Community Engagement and Research Centre and the Multicultural Council of Saskatchewan (MCoS). These collaborations strengthened our ability to offer professional development opportunities to the VSCN.

**“Moving to a virtual platform means we’ve been able to reach more people. We even had some attendees from England and the USA in our webinars. It was incredible to see our reach expand due to the ease of access that a virtual platform gives us.”**

**Karen Henders**, SSCF's Director of Community & Grant Stewardship



VSCN December 2020 meeting via Zoom.



Title slide of a presentation given to the VSCN in November 2020.



**Amanda Lewis**, Executive Director of REALM Foundation

**“For me, being a part of VSCN helps keep me connected in the community which was even more important in 2020. I appreciate the effort made by Karen Henders and everyone at SSCF to shift to virtual meetings and explore how to facilitate connection within VSCN during a pandemic. In some ways I feel even more connected now to other members. Karen has done an excellent job at creating a positive, safe and open virtual environment to share ideas and feedback. I love that a simple nod of agreement or commenting in the chat box makes it easier for all of us to support each other. I feel like we’ve had more laughter in the meetings than we did in person and for that I am grateful. One of my favourite VSCN moments from 2020 is the virtual scavenger hunt in December. What a fun way to end a unique year.”**



# Vital Signs Community Network

## *2020 Events and Webinars*

### ***Quarterly VSCN Meetings***

At the quarterly meetings hosted by Karen Henders, SSCF's Director of Community & Grant Stewardship, members discuss their work and community needs. When possible, there are professional development opportunities through peer sharing, guest speakers, or partnerships with other organizations throughout the year.



### ***Recognize and Reject Racism*** with the Multicultural Council of Saskatchewan

A webinar examining racism and creating a positive change was the focus of a unique virtual presentation by Rhonda Rosenberg, Executive Director of Multicultural Council of Saskatchewan, during the August VSCN meeting.

### ***Business Building & Giving:*** How to Engage Clients in the Philanthropic Conversation

Guest speaker Paul Nazareth, VP of Education with the Canadian Association of Gift Planners, provided his expertise and advice during a discussion regarding philanthropy in December.



### ***Equity, Diversity, and Inclusion Series*** with the University of Regina Community Engagement Centre

Two engaging workshops facilitated by educators, including Pauline Streete, the Equity, Diversity and Inclusion Officer for Research at the University of Regina, provided a brave and safe space for individuals who explored these sensitive topics in November and December.

## *Joyce Gemmell Jessen Habitat Conservation Fund*

# Nature Conservancy of Canada's Securement of Ecologically Significant Land Near Buffalo Pound



Photograph by Jason Leo Bantle

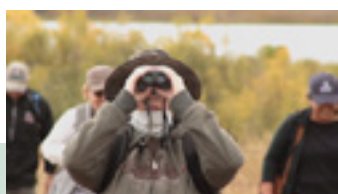
Nature Conservancy of Canada (NCC) received \$9,100 in 2019 from the Joyce Gemmell Jessen Habitat Conservation Fund, held at SSCF, to assist in securement of land near Buffalo Pound Lake in February 2020. This process was in addition to other funding resources to bring the project to fruition. With this support, NCC secured the title of 2,140 acres of vitally important habitat along Buffalo Pound Lake.

“**The funding we received from the Joyce Gemmell Jessen Habitat Fund was a keystone investment that helped build excitement towards the conservation project and gain momentum with other donors. We're grateful to have the Buffalo Pound project become a reality. It's an incredible area that contains native grasslands along a remarkable shoreline. Conserving these grasslands is one of the most important things we can do to help the plants and animals that live there, as well as filter the air we breathe and provide quality drinking water in southern Saskatchewan. Thanks to the support of our partners and generous donors, the area will be conserved for the long term.**

**Cameron Wood**, Director of Conservation at Nature Conservancy Canada Saskatchewan Region

The property consists of native grasslands, which are among the most endangered ecosystems in the world. The property, 40 kilometres from Moose Jaw, Saskatchewan, includes seven kilometres of remarkable shoreline along the north shore of Buffalo Pound Lake.

This property also represents an essential habitat for a diversity of species, including at-risk species such as the Sprague's pipit, Baird's sparrow, American badger, northern leopard frog, and many others.



*NCC conducted a walk through the secured land near Buffalo Pound in September, 2020.*

# Planting Seeds *Across Southern Saskatchewan*

Southern Saskatchewan Region in 2020:

**482**

*Communities*

**>470K**

*Population*

*As of 2017 (Statistics Canada)*

**225**

*Charities  
Supported*

**\$9.4M**

*Granted*

*Swift  
Current*  
**16,604**  
*Population*

*Regina*  
**228,928**  
*Population*

*Yorkton*  
**16,343**  
*Population*

*Melville*  
**4,562**  
*Population*

*Moose  
Jaw*  
**33,890**  
*Population*

*Weyburn*  
**10,870**  
*Population*

*Estevan*  
**13,615**  
*Population*





## *The Bill and Helen Davidson Foundation Fund* Community Impact in 2020 a Top Priority

The Bill and Helen Davidson Fund (BHDF) started in 2008 and administered by a local committee. It is a strong example of community impact in southern Saskatchewan.

The eight-member committee works together as they identify where this endowed, donor-advised fund can make the most significant difference. The committee meets semi-annually and ensures the Davidson's interests are top of mind.

"Everyone on the committee knew Helen personally, either as a music student, a good friend, accountant or lawyer," says Cleone Jeffery, who serves as secretary for the committee. "They knew her personality well and are always assessing the local needs. We ask ourselves - 'What would Helen say?'"

Helen had made up a list of charities that she supported annually and was very clear she wanted the grants to stay in Weyburn and District, or the southeast, and used for cultural and benevolent purposes.

"Helen wanted to help young musicians further their careers, but so often they don't have access to a charitable number," Cleone notes. "We are still looking at ways to offer a scholarship or bursary."

Over the years, there have been numerous worthy causes that have benefited from the community development grant. Between 2009 and 2020, approximately \$911,355 has been granted. In 2020 with the pandemic, immediate community needs became more urgent. Support for local organizations was a priority within its \$32,000 disbursement.



Former SSCF Executive Director, Wain Birch (L), accepting the inaugural donation of \$100,000 to the BHDF from Helen Davidson (R) in 2008.

This year's grants included \$1,500 to the Canadian Mental Health Association (CMHA) Weyburn Branch to use at their discretion.

Program Director, Tasha Collins, says the generosity supported efforts to provide a positive environment for clients as they work to build their skills.

"The Canadian Mental Health Association - Weyburn Branch thanks the Bill and Helen Davidson Foundation for their support," says Collins. "The funds received were put towards the purchase of our Vocational Work truck. Through this purchase, we not only invested in a new vehicle, but we also invested in the longevity of the Vocational Rehabilitation Program that is available through our branch. We are grateful for the support and applaud the donations made into communities through the South Saskatchewan Community Foundation and the Davidson Fund."



## Investment Readiness Program

# YWCA Receives Essential Market Research Funding



YWCA participated in the Sunrise Ceremony with the Willow Warriors, Betty McKeena and their partners at All Nations Hope Network. To celebrate the rising of the sun on summer solstice and National Indigenous Peoples Day was an honour. The strength of ceremony and voices welcoming the sun was both beautiful and powerful. The ceremony included blessing and honouring the land that is ready and waiting for the new YWCA Centre for Women and Families.

**In July, the Government of Canada Investment Readiness Program (IRP) awarded its first round of funding, including \$403,250, to 11 social purpose organizations within Saskatchewan.**

**The IRP is designed to help social purpose organizations scale up their social enterprises to prepare to accept investments. The eventual goal is for these organizations to be able to participate in the social finance market and generate a return for investors while having a positive impact on their communities.**

Karen Henders, SSCF Director of Community and Grant Stewardship, says SSCF was excited about its role as part of the Saskatchewan Consortium, which included convening a mix of community foundations, charities, cooperatives, businesses and economic development organizations.

"The Consortium came together to evaluate more than 50 applications in the first round of available funding to facilitate an opportunity for more social enterprises to be investment-ready," says Henders.

"We know from our community research, most recently the 50 Vital Community Conversations report from 2019 and the Vital Signs Community Network, how important collaboration is to ensuring successful outcomes. Through the IRP program we have gained a better understanding of social enterprise and the importance of engaging with diverse groups."



**We will continue to look for ways to collaborate, to challenge ourselves and to strengthen our work.**



**Melissa Coomber-Bendtsen, CEO of YWCA Regina**

One of the successful IRP proposals was from the YWCA of Regina. CEO Melissa Coomber-Bendtsen says the program funding helped shape business plans and financial modelling for their organization.

"The Investment Readiness Program has allowed us to conduct vital market research as well as access professional services to ensure that our new social enterprises have a solid foundation for success," says Coomber-Bendtsen. "While the YWCA has years of experience developing programming for vulnerable women and families, it was essential for us to connect with experts in the business sector to help fully develop programming that will ensure the YWCA has diversified funding and is sustainable."



### IRP Saskatchewan Partners



## SSCF Board Member, Bula Ghosh *Recipient of Prestigious Medal*

SSCF salutes the countless volunteers who lend a hand every day. Together, these efforts impact lives and make our communities better places to live, work and play. The commitment to make a difference is witnessed through our donors, our grant recipients and indeed our very own volunteer Board of Directors.

In 2020, the province marked the 25th anniversary of the Saskatchewan Volunteer Medal. The Medal is bestowed to recognize the extraordinary work by volunteers across the province. Since its establishment, it has been presented to 217 deserving individuals.

One of the honoured recipients of the Medal for 2019 is SSCF Board member, Bula Ghosh. Bula resides in Swift Current and has been extensively involved in numerous organizations since moving to Canada in 1981.

Congratulations, Bula, and to all our Board for making a difference in Saskatchewan!



“

**By doing something for others, there is so much one gets in return. I feel that it is the person who is giving that is more fortunate than the person who is receiving. We know that volunteers live healthier lives and are happier because of the joy they get by being able to make a difference in the lives of other people or their community.**

**Bula Ghosh**, Director at SSCF's Board of Directors

## *Leading with Hope: Don Black and Ted Welter Raise More Than \$223,000*



L to R: Ted Welter, Don Black

**Exceptional community leaders Don Black and Ted Welter were quick to spearhead Leading with Hope within SSCF's Emergency Response Fund during the unprecedented COVID-19 pandemic. Their focused efforts linked more than 32 donors and resulted in more than \$223,000 being raised in less than four weeks.**

With heartfelt generosity, they helped to ensure our most vulnerable communities were connected to 34 charities and that staff could continue to deliver much needed service right across southern Saskatchewan.

Congratulations to the Leading with Hope team, an honouree in the Outstanding Community Group category for the Association of Fundraising Professionals South Saskatchewan, National Philanthropy Day award, sponsored by Hospitals of Regina Foundation.



## Honouring the Memory of *Saros Cowasjee*

We honour the memory of Saros Cowasjee, award recipient in the Association of Fundraising Professionals South Saskatchewan, National Philanthropy Day award, Outstanding Legacy Philanthropist category, sponsored by SSCF.

Throughout his life, Saros Cowasjee (1931-2019) was very generous both in his support, the time for students as a Professor and his passion for helping small animals. The Saros Cowasjee Small Animal Foundation Fund was established in 2008 at SSCF. The income from this Fund was often donated to Humane Societies throughout southern Saskatchewan. In the past two years, this Fund has provided over \$24,500 to Humane Societies across Saskatchewan.

In 2020, the Saros Cowasjee Small Animal Foundation Fund provided a total of \$12,189.48 to humane societies. Regina Humane Society Inc., Estevan Humane Society Inc., Weyburn Humane Society Inc., and Prince Albert Society for the Prevention of Cruelty to Animals Inc. each received \$3,047.37 to assist their efforts.

**Because this is an Endowed gift, Saros' legacy will continue to give back to this field of interest. Through his generous Estate bestowment of more than \$1 million we honour these important priorities in perpetuity demonstrating the transformational power of wills and benefits of planning forward.**



L to R: Karen Henders (SSCF), Lisa Koch (Regina Humane Society) accepting the award on behalf of Saros Cowasjee



## Remembering *Stuart Mann*

Stuart Mann passed away on January 17, 2021. He was an active member of many community groups, including SSCF. Stuart was the Fundholder of the Mann Family Trust Fund that is currently held at SSCF with the purpose of supporting SSCF's operational needs. He had also volunteered on SSCF's Board of Directors in the past.

Stuart Mann and the Mann family's support of SSCF is greatly appreciated. The Board and staff at SSCF extend their deepest condolences to the Mann family.





## Looking to Help Build Community and *Leave Your Legacy*?

Every year, generous donors from different walks of life dig deep to plant seeds of hope, creating opportunities to help others belong. The South Saskatchewan Community Foundation serves as a bridge to connect donors with targeted needs of our community. Our team will help you fulfill your wishes by listening and facilitating a meaningful discussion about your values and goals for your legacy. As a local Foundation, we know the community, the charities, and the many options available to make your dream a reality.

***Companies*** establish Funds to exemplify their commitment to social responsibility and involve their employees in community building.

***Charities*** create Funds as a way to build a solid foundation of financial support in the face of uncertain granting cycles.

## What is an *Endowment Fund*?

An Endowment or “Forever” Fund is where the money is pooled and permanently invested as capital and earns annual interest. The annual interest earned is granted for charitable purposes, simultaneously supporting community causes yearly and preserving the original donation to generate funds in perpetuity.

### **An Endowment Fund allows you to:**

- Plan effectively to provide ongoing support for a charitable cause or organization that you believe in for years to come.
- Leave your legacy by naming a Fund in honour of someone you admire.
- Donate to a Fund monthly, annually, or at any moment and receive a taxable charitable receipt.



# Types of Funds

## ***Donor Advised Fund***

Support projects or programs you find meaningful. You take an active role in the decision-making process year upon year.

## ***Donor Designated Fund***

Provide stable and lasting support to the charitable organization(s) of your choice. Charities benefit year after year.

## ***Community Building Fund***

Address our community's immediate and future needs. Funds respond to grant applications received through the Foundation's Community Grants program.

## ***Scholarship Fund***

Help generations of local students pursue their educational dreams for the future.

## ***Field of Interest Fund***

Make a lasting impact on a specific community need or interest area that is important to you.

---

# How You Can Give

We are happy to work directly with families, charities, corporations, and legal and financial advisors. If preferred, your donation may also remain anonymous. Here are several donation options available:

***Non-Cash Assets  
to a Charitable  
Remainder Trust***

***Donate Online at  
[www.sscf.ca](http://www.sscf.ca)***

***Gifts Made by  
Cheque***

***Will***

***Monthly Giving***

***Life Insurance***

***Non-Cash Gifts***

***Securities  
or Stocks***

***RRSPs, Mutual  
Funds, or GICs***

***Land or Property***

**To learn more about giving with SSCF, download our  
Donor Brochure at [www.sscf.ca/donor-brochure](http://www.sscf.ca/donor-brochure)**

# *Funds Supported by SSCF*

- 22nd Century Club Fund
- Anonymous Donor Fund (5)
- Art and Joyce Marbach Family Foundation Fund
- Big Sky Centre for Learning and Being Astonished! Fund (2)
- Canadian Red Cross Society - Saskatchewan Endowment Fund
- Cedar Hill Cemetery Trust Fund
- City of Regina Capital Fund
- CKCK-TV Trust Fund
- Clark and Anne Lewis Charitable Fund
- Constance M. Acton Fund
- Derril McLeod Family Foundation Fund
- Donald and Claire Kramer Foundation Fund
- Doris and Clarence Taylor Foundation Fund
- Dorothy Wilson Scholarship Fund
- DoubleUp Opportunities Inc. Fund
- Doug Barber Memorial Fund (2)
- Drs. Lewis and Elisabeth Brandt Trust Fund
- Duke of Edinburgh's Award, Saskatchewan Division Fund
- Ehrmantraut Foundation Fund
- Emergency Response Fund for Community Needs
- Ena and John Houston Trust Fund
- Federation for the Blind Trust Fund
- Fred and Margaret Greenough Fund
- Friends of the MacKenzie Acquisition Fund
- G. Murray and Edna Forbes Foundation Fund
- Gary Hyland ALS Fund
- Gary Hyland Literary Scholarship Fund
- Genevieve and Murray Grant Trust Fund
- George Butt Foundation Fund
- Gerald B. Wilson Scholarship Fund
- Glengarry Book Award Fund
- Globe Theatre Society Endowment Fund
- Harald Liebe Scholarship Fund
- Helen and Gerard Shearer Foundation Fund
- Hertha Pfeifer Foundation Fund
- Jamieson Family Legacy Fund
- Jamieson Family Legacy Scholarship Fund
- Jim Rose Memorial Fund
- John and Marcella Chamberlain Fund
- John Patton Trust Fund
- Joyce Gemmell Jessen Habitat Conservation Fund
- Kathleen Wilson Scholarship Fund
- Ken Smith and Rachelle Mondor Smith Family Fund
- Kramer Ltd. Foundation Fund
- Kramer Operating Trust Fund
- Kramer Science Fund
- Larry Wilson Fund
- Lawrence Wilson Scholarship Fund
- Leader-Post Foundation Legacy Fund
- Lloyd and Duna Barber Family Foundation Fund
- Lyn Goldman Charitable Trust Fund
- Lynn and Jim Tomkins Foundation Fund
- Mann Family Trust Fund
- Marian Gardens Charitable Fund
- Marlene Wilson Scholarship Fund
- Mary and Vern Fowke Trust Fund
- Maynard and Ida Gray Fund
- Michael and Sandra Poon Charity Fund
- Millenium Fund
- Miller Thomson Fund
- MNP Community Fund
- Moffat Family Fund
- Moose Jaw Community Foundation Inc. Fund
- Moosomin and District Music Festival Endowment Fund
- Mr. and Mrs. Jack Ambler Trust Fund
- National Theatre School of Canada Fund
- Nell Holowachuk Fund
- OptionS Pregnancy Centre Fund
- Prairieview Wealth Management Fund
- Regina Auxilary War Services Fund
- Regina Humane Society Endowment Fund
- Regina Leader-Post Christmas Cheer Fund
- Regina Paramedics with Heart Fund
- Regina Symphony Orchestra Inc. Endowment Fund
- Regina Symphony Orchestra Reserve Fund
- Regina Work Preparation Centre Fund
- Ritenburg Family Fund
- Robbie Curtis Memorial Scholarship
- Robert B. McClelland North Okanagan Fund
- RPCI Good Mourning Fund
- Saskatchewan Roughrider Foundation Endowment Fund
- Saskatchewan Roughrider Foundation Non-Endowed Fund
- SASW Scholarship Fund
- SCEP Centre Society (Regina) Operating Fund
- Scholarship Fund
- Scott Collegiate Alumni Scholarship Fund
- Semenchuck Family Fund
- Shyanne Parsons Foundation Fund (2)
- Smart & Caring Fund (2)
- South Shore Community Foundation Fund
- SSCF Non-Endowed Fund
- Stan Doucette Memorial Fund
- Sylvia Wilson Scholarship Fund
- The Bill and Helen Davidson Foundation Fund
- The Book Project Fund
- The DEK All Nations Healing Hospital Foundation Fund
- The Johnny Z Healthy Minds Fund
- The MacKenzie Art Gallery Operating Endowment II - Anonymous Fund
- The Saros Cowasjee Small Animal Foundation Fund
- The Second Lieutenant Andrew Naismith Benevolent Fund
- The Steven Dale Ripplinger Legacy Fund
- Wain Birch Family Foundation Fund
- Whitespruce Fund
- YMCA of Regina Fund (2)

# Audited Financial Statements

As at December 31, 2020, with comparative figures for 2019

STATEMENT OF FINANCIAL POSITION	2020	2019
<b>ASSETS</b>		
<b>Current Assets</b>		
Cash	\$1,969,847	\$179,535
Accounts receivable	\$88,612	\$67,818
Prepaid expenses	\$3,300	\$10,065
Accrued interest receivable	\$4,026	\$16,274
Total Current Assets	<b>\$2,065,785</b>	<b>\$273,692</b>
<b>Tangible capital assets</b>	<b>\$17,091</b>	<b>\$17,571</b>
<b>Investments</b>	<b>\$88,286,964</b>	<b>\$79,923,407</b>
<b>Intangible Assets</b>	<b>\$2,000,000</b>	<b>\$2,000,000</b>
<b>TOTAL ASSETS</b>	<b>\$92,369,840</b>	<b>\$82,214,670</b>
<b>LIABILITIES</b>		
<b>Current Liabilities</b>		
Accounts payable	\$147,349	\$113,270
Deferred revenue	\$33,489	\$32,137
Total Liabilities	<b>\$180,838</b>	<b>\$145,407</b>
<b>FUND BALANCES</b>		
<b>General</b>	<b>\$1,133,072</b>	<b>\$937,516</b>
<b>Operational reserve</b>	<b>\$500,000</b>	<b>\$500,000</b>
<b>Endowment</b>	<b>\$90,555,930</b>	<b>\$80,631,747</b>
<b>Total Fund Balances</b>	<b>\$92,189,002</b>	<b>\$82,069,263</b>
<b>TOTAL LIABILITIES &amp; FUND BALANCES</b>	<b>\$92,369,840</b>	<b>\$82,214,670</b>

## STATEMENT OF OPERATIONS AND CHANGES IN FUND BALANCES

REVENUE	GENERAL	ENDOWMENT	2020	2019
Contributions	\$1,336	\$8,026,312	\$8,027,648	\$7,631,221
Investment income	\$22,707	\$1,470,053	\$1,492,760	\$1,678,951
Royalty revenue	-	\$524,028	\$524,028	\$945,152
Fund administration	\$177,029	-	\$177,029	\$40,000
Realized gain (loss) on sales of investments	\$728	\$56,685	\$57,413	\$182,619
Unrealized gain (loss) on investments	\$162,546	\$10,543,089	\$10,705,635	\$8,755,056
<b>TOTAL REVENUE</b>	<b>\$364,346</b>	<b>\$20,620,167</b>	<b>\$20,984,513</b>	<b>\$19,232,999</b>
<b>EXPENSES</b>				
Distributions	\$200	\$9,444,763	\$9,444,963	\$4,352,758
Intangible asset impairment	-	-	-	\$1,091,050
Investment management fees	-	\$404,511	\$404,511	\$337,375
Amortization	\$8,936	-	\$8,936	\$7,040
Mineral royalty taxes		\$5,347	\$5,347	\$5,348
Administration	\$180,130	\$820,887	\$1,001,017	\$954,447
<b>TOTAL EXPENSES</b>	<b>\$189,266</b>	<b>\$10,675,508</b>	<b>\$10,864,774</b>	<b>\$6,748,018</b>
<b>FUNDS</b>				
Increase in fund balances	\$175,080	\$9,944,659	\$10,119,739	\$12,484,981
Fund balance – beginning of year	\$1,320,553	\$80,748,710	\$82,069,263	\$69,584,282
Prior period adjustment	\$116,963	(\$116,963)		
Transfers	\$20,476	(\$20,476)	-	-
<b>TOTAL FUND BALANCE, END OF YEAR</b>	<b>\$1,633,072</b>	<b>\$90,555,930</b>	<b>\$92,189,002</b>	<b>\$82,069,263</b>



# *Thank You!*

2020 was an unprecedented year. The generosity of donors and volunteers in our community has positively shaped our world. Whether you opened your wallet for an important cause, worked for an organization supporting people through the pandemic, or found other ways to volunteer your time, **all of us at South Saskatchewan Community Foundation can't thank YOU enough for your efforts.**



South  
Saskatchewan  
Community  
Foundation

Phone: (306) 751-4756  
Toll-free: 1 (877) 751-4756  
Email: [info@sscf.ca](mailto:info@sscf.ca)  
Charity number: 890271448 RR0001

#### Connect with us:

-  [@sscf.ca](https://www.facebook.com/sscf.ca)
-  [@SouthSaskFdn](https://twitter.com/SouthSaskFdn)
-  [@South Saskatchewan Community Foundation](https://www.linkedin.com/company/SouthSaskatchewanCommunityFoundation)

[www.sscf.ca](http://www.sscf.ca)