

Preserve Your Agricultural Legacy for Generations to Come



At the South Saskatchewan Community Foundation, we understand the profound impact that retiring farmers have on their communities. Our mission is to secure your legacy by facilitating the donation of farmland, ensuring that the proceeds continue to benefit the causes you care deeply for, which can include the agricultural community, your home town, and the charities that you believe in.

THE COMMUNITY FOUNDATION CAN FACILITATE THE DONATION OF LAND FOR SALE, OR TO HOLD, IN PERPETUITY, TO HONOUR YOUR LEGACY.

CHALLENGES FACED BY RETIRING FARMERS

Retiring farmers often face significant challenges:

- 1. Succession Issues:** Many retiring farmers lack successors who can continue their farming legacy, leaving them unsure about the future of their land.
- 2. Financial Concerns:** Selling farmland can have complex tax implications, and the proceeds might not be sufficient to maintain their desired quality of life during retirement.
- 3. Emotional Attachments:** Farmers are deeply connected to their land, which can make the prospect of selling an emotionally challenging decision.

THE ECONOMIC AND SOCIAL IMPACT OF LOSING AGRICULTURAL LEGACIES

The loss of retiring farmers' legacies can have profound economic and social consequences:

- 1. Economic Decline:** Farm sales can lead to urban sprawl, reducing the availability of arable land and increasing food production costs.
- 2. Loss of Knowledge:** Valuable farming knowledge accumulated over generations may be lost, affecting the sustainability and productivity of the agricultural sector.
- 3. Community Identity:** Rural communities often rely on farming as a core identity and source of social cohesion, which can erode as farms are sold.

OUR INNOVATIVE APPROACH TO LEGACY PRESERVATION

We offer a solution to address these challenges:

While we can coordinate a donation of land and the sale, we are also open to unique donations.

Donation, Not Sale: Instead of selling farmland, retiring farmers are able to donate their land to the Foundation. This allows your legacy to live on, benefiting the agricultural community and the charities you care about. We are not just a transactional institution, we have the ability to keep the land as an asset and rent it out to provide income.

Income from Leasing: The Foundation holds the donated farmland and leases it to local farmers. The rental income generated goes toward supporting the charitable causes and organizations you cherish, forever.

Tax Benefits: By donating farmland, you can likely enjoy significant tax benefits, including capital gains tax relief. Talk to your financial planner to review your possible benefits.



P: (306) 751-4756
TF: 1 (877) 751-4756
E: info@sscf.ca
W: www.sscf.ca



Real World *Legacy Impacts*

OUR APPROACH HAS ALREADY POSITIVELY IMPACTED COMMUNITIES:

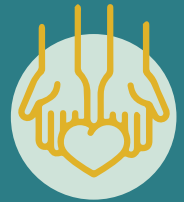
The George Butt Legacy Fund: In 2008, George Butt, a long-time farmer, created a legacy fund through the Foundation to benefit his hometown of Arcola for generations to come. Each year, the George Butt Foundation Fund provides support to Prairie Place Hall, Arcola Curling Club, St. Andrew's United Church, and the Arcola Cemetery.

For people who want to give back right where they live, where they farm, where their business is, or where they grew up and planted their roots, the Foundation can work with the donor to ensure their community benefits, forever, from their gifts. George Butt serves as an inspiring testament to the impact of Legacy Giving in nurturing the community he holds dear.

The G. Murray and Edna Forbes Fund: The G. Murray and Edna Forbes Fund, managed by the Foundation (SSCF), represents a remarkable testament to the power of wise philanthropy and strategic asset management. G. Murray and Edna Forbes, legal and education professionals with a deep commitment to their community, started their Legacy Fund in 2002 with an initial donation of \$100,000. Their goal was to create a lasting legacy that would benefit the community both now and in the future.

One of the key drivers of the fund's remarkable growth has been the Foundation's ability to manage the mineral rights and keep these valuable assets. The Foundation's ability to manage their families gift of mineral rights, and to hold these valuable assets in their memory, has resulted in the fund's assets surpassing \$22 million. More importantly, the G. Murray and Edna Forbes Fund consistently gives back close to \$1 million each year (and growing) to local charities, making a significant and enduring impact on the community. The Foundation maintains a close partnership with the Forbes family successors, ensuring that the fund continues to address current community needs while honouring the couple's original vision.

The George Butt and G. Murray and Edna Forbes Legacy Funds are powerful examples of how our community foundation can be entrusted with valuable assets to create lasting impacts on community. They serve as inspiring stories for those who seek to leave a meaningful and enduring mark on their community, both in the present and for generations to come.



The Foundation began over 50 years ago and has become an expert in unique gifts. Our role is to honour and protect your legacy so generations can benefit from your generosity. Come join our family where we currently protect and celebrate over 100 other legacy stories.



**South
Saskatchewan
Community
Foundation**